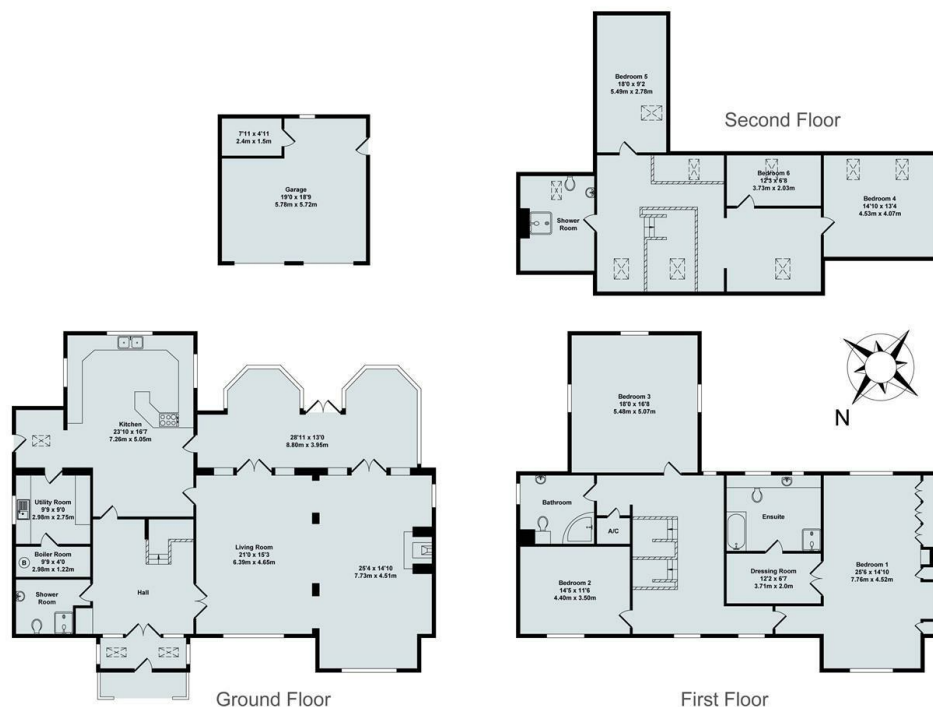




## Hadfield House Little Paddock, Fringford, Bicester, OX27 8EJ

£3,750 - 5th January 2026.

- Six bedroom detached house
- South facing gardens
- Double garage
- Mains water and electricity
- Four bathrooms
- Oil fired central heating
- Council Tax Band G
- Impressive conservatory
- Off street parking
- EPC rating D



Total Approx. Floor Area 4820 Sq.Ft. (447.80 Sq.M.)  
All items illustrated on this plan are included in the "Total Approx Floor Area"

## Directions

## Viewings

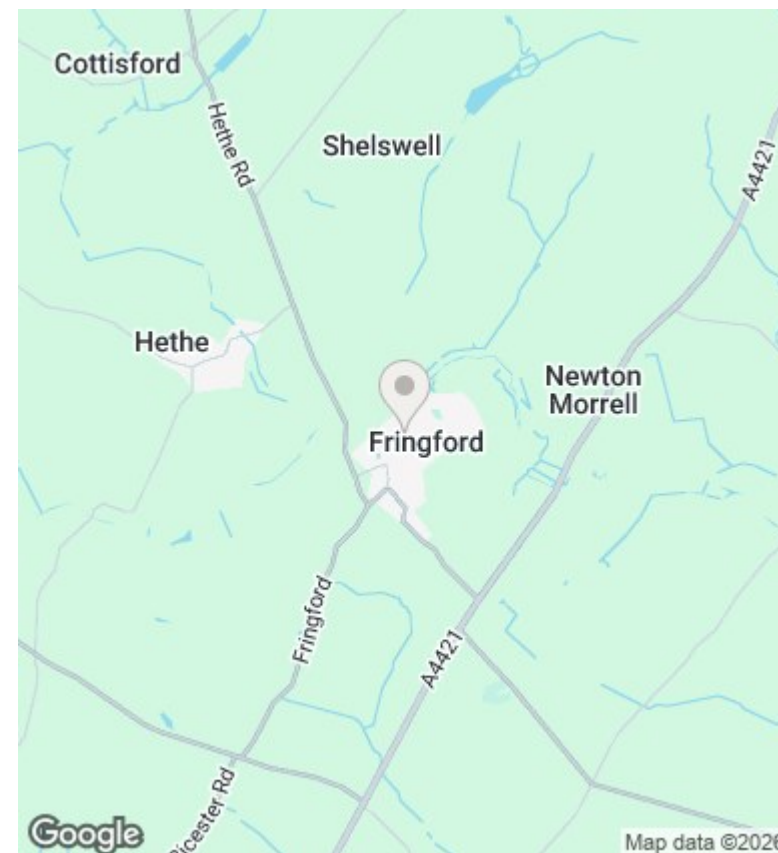
Viewings by arrangement only. Call 01865 515900 to make an appointment.

## Council Tax Band

G

## EPC Rating:

D



Energy Efficiency Rating		
	Current	Potential
Very energy efficient - lower running costs		
(92 plus) <b>A</b>		
(81-91) <b>B</b>		
(69-80) <b>C</b>		
(55-68) <b>D</b>	68	72
(39-54) <b>E</b>		
(21-38) <b>F</b>		
(1-20) <b>G</b>		
Not energy efficient - higher running costs		
<b>England &amp; Wales</b>	EU Directive 2002/91/EC	